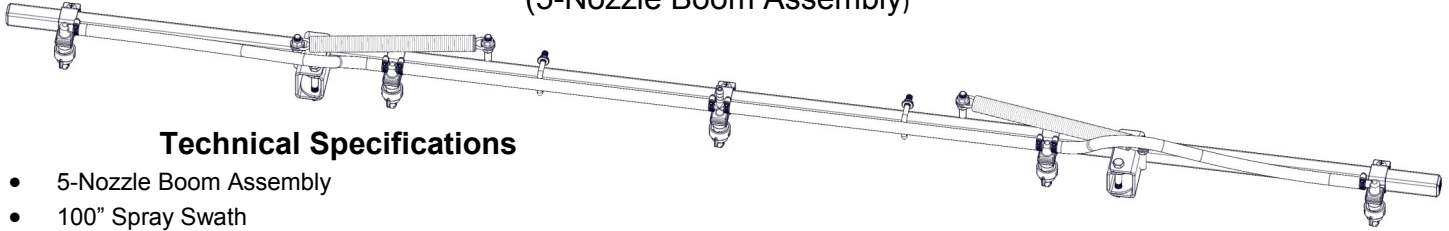


OWNER'S MANUAL

Model: BA-5 (5302179)

(5-Nozzle Boom Assembly)



Technical Specifications

- 5-Nozzle Boom Assembly
 - 100" Spray Swath
 - Break-Away Outer Boom Members
 - AIXR11002VP, #2 (Yellow) 110° tips (**)
- (**) These tips provide excellent chemical and acid resistance with an exceptionally long wear life. 110° wide tapered, flat spray angle with air induction technology for better drift management. Compact size prevents tip damage.

Assembly Instructions

Remove the parts to the boom assembly from the carton. Refer to the parts list and exploded view drawing to help identify all the components.

- Center the center section of the boom onto your boom mounts and secure in place with the hardware provided. Be sure that the outer booms will fold 'backwards'. The boom should be about 17"-19" above what you are spraying.
- Attach the nozzle harness assembly to the boom.
- Route the boom feeder hose from the boom connection to the valve on your sprayer (not included), which will supply the boom assembly. Then clamp in place with a hose clamp.
- Your boom should be ready for operation.

IF YOU SHOULD HAVE A QUESTION OR EXPERIENCE A PROBLEM WITH YOUR AG SPRAY PRODUCT GIVE US A CALL

BAKERSFIELD, CA 877-724-2236	COLUMBUS, NE 800-274-1025	DOTHAN, AL 800-227-4098
GREENWOOD, MS 800-844-4524	HOPKINSVILLE, KY 800-637-7172	NEWTON, KS 800-394-7662
OTHELLO, WA 800-634-2026	TEMPE, AZ 877-974-7166	

BEFORE YOU CALL, PLEASE HAVE THE FOLLOWING INFORMATION AVAILABLE: SALES RECEIPT & MODEL NUMBER. IN MOST CASES, AN AG SPRAY EMPLOYEE CAN RESOLVE THE PROBLEM OVER THE PHONE

General Information

Thank you for purchasing this product. The purpose of this manual is to assist you in operating and maintaining your boom kit. Please read it carefully, as it furnishes information which will help you achieve years of trouble-free operation.

Warranty

Products are warranted for one year from date of purchase against manufacturer or workmanship defects for home owner usage and 90 days for commercial usage.

For technical assistance, visit our website @ www.agspray.com or call: Toll Free to one of the above phone numbers

Our Technical Support Representatives will be happy to help you.

To obtain prompt, efficient service, always remember to give the following information...

- Correct Part Description and/or part number
- Model #/Serial # of your sprayer

Part descriptions and numbers can be obtained from the illustrated parts list section(s) of this manual.

Spray Tip Rate Chart (20" Spacing)

Tip No.	Pressure (psi)	Capacity (GPM)	Gallons Per Acre - Based on Water							
			1 MPH	2 MPH	3 MPH	4 MPH	5 MPH	6 MPH	8 MPH	
AIXR11002VP	15	.12	35.6	17.8	11.8	8.9	7.1	5.9	4.5	
	20	.14	41.6	20.8	13.8	10.4	8.3	6.9	5.2	
	30	.17	50.4	25.2	16.8	12.6	10.1	8.4	6.3	
	40	.20	59.6	29.8	19.8	14.9	11.9	9.9	7.4	
Tip No.	Pressure (psi)	Capacity (GPM)	Gallons Per 1000 Sq. Ft. - Based on Water							
			1 MPH	2 MPH	3 MPH	4 MPH	5 MPH	6 MPH	8 MPH	
AIXR11002VP	15	.12		.41	.27	.20	.16			
	20	.14		.48	.32	.24	.19			
	30	.17		.58	.39	.29	.23			
	40	.20		.68	.45	.34	.27			



www.agspray.com

[5008357

(10/15)]

Testing the Sprayer

NOTE: It is VERY important for to test your sprayer with plain water before actual spraying is attempted. This will enable you to check for leaks without the possibility of losing any expensive chemicals.

Conditions of weather and terrain must be considered when setting the sprayer. Do not spray on windy days. Protective clothing must be worn in some cases

Be sure to read the chemical label(s) before application!

Calibration

Chemical labels may show application rates in gallons per acre, gallons per 1000 square feet or gallons per 100 square feet. You will note that the tip chart shows 2 of these rating systems.

Once you know how much you are going to spray, then determine (from the tip chart) the spraying pressure (PSI), and the spraying speed (MPH).

Determining the proper speed of the pulling vehicle can be done by marking off 100, 200 & 300 feet. The speed chart indicates the number of seconds it takes to travel the distances. Set the throttle and with a running start, travel the distances. Adjust the throttle until you travel the distances in the number of seconds indicated by the speed chart. Once you have reached the throttle setting needed, mark the throttle location so you can stop and go again, returning to the same speed.

Add water and proper amount of chemical to the tank and drive to the starting place for spraying.

Using the Boom Nozzles

Four things must be considered before spraying with the boom.

1. How much chemical must be mixed in the tank.
 2. Rate of spray (gallons per acre to be sprayed).
 3. What pressure (p.s.i.) will be used.
 4. Speed traveled (mph) while spraying.
- * Refer to the chemical label to determine your chemical mixture
 - * See the tip chart to determine the pressure to be used. The chart will also show the speed used when spraying.
 - * Generally the proper height will be about 18 inches from the object(s) being sprayed.

Operation

Always fill the tank 1/2 full with water first and then add the chemical slowly, mixing as you pour the chemical into the tank and then fill the rest of the way. You may use the bypass in order to mix the chemical and water.

- Activate the handgun by squeezing the handle lever
- Rotating the adjustable nozzle tip on the handgun will change the tip pattern from a straight stream to a cone pattern (fine mist)

Maintenance During/After Spraying

Proper care and maintenance will prolong the life of your sprayer. After use, fill the sprayer tank part way with water. Start the sprayer and allow the clear water to be pumped through the plumbing system and out through the spray nozzles. Refill the tank about half full with plain water and use FIMCO Tank Neutralizer and Cleaner and repeat cleaning instructions above. Flush the entire sprayer with the neutralizing/cleaning agent, then flush out one more time with plain water. Follow the chemical manufacturer's disposal instructions of all wash or rinsing water. For the boom (if applicable) remove the tips and screens from the nozzle assemblies. Wash these items out thoroughly. Blow the orifice clean and dry. If the orifice remains clogged, clean it with a fine bristle (NOT WIRE) brush or with a toothpick. Do not damage the orifice. Water rinse and dry the tips before storing.

WARNING: Some chemicals will damage the pump valves if allowed to soak untreated for a length of time! ALWAYS flush the pump as instructed after each use.

Winter Storage

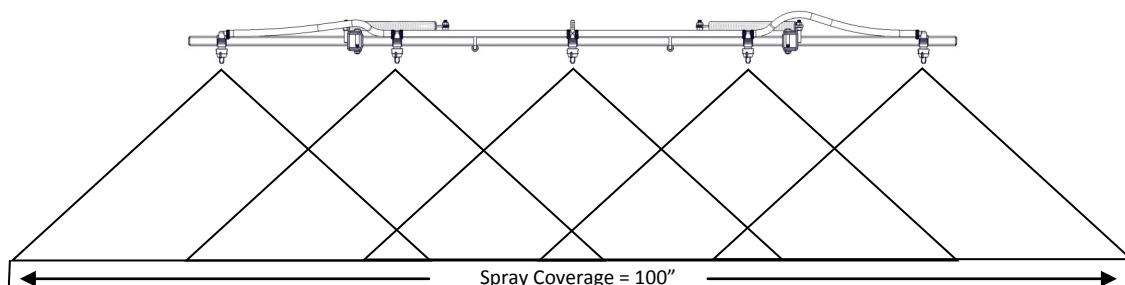
Drain all water out of your sprayer, paying special attention to the pump, handgun and valve(s). These items are especially prone to damage from chemicals and freezing weather.

The sprayer should be winterized before storage by pumping a solution of RV antifreeze through the entire plumbing system. This antifreeze solution should remain in the plumbing system during the winter months. When spring time comes and you are preparing your sprayer for the spray season, rinse the entire plumbing system out, clearing the lines of the antifreeze solution. Proper care and maintenance will prolong the life of your sprayer.

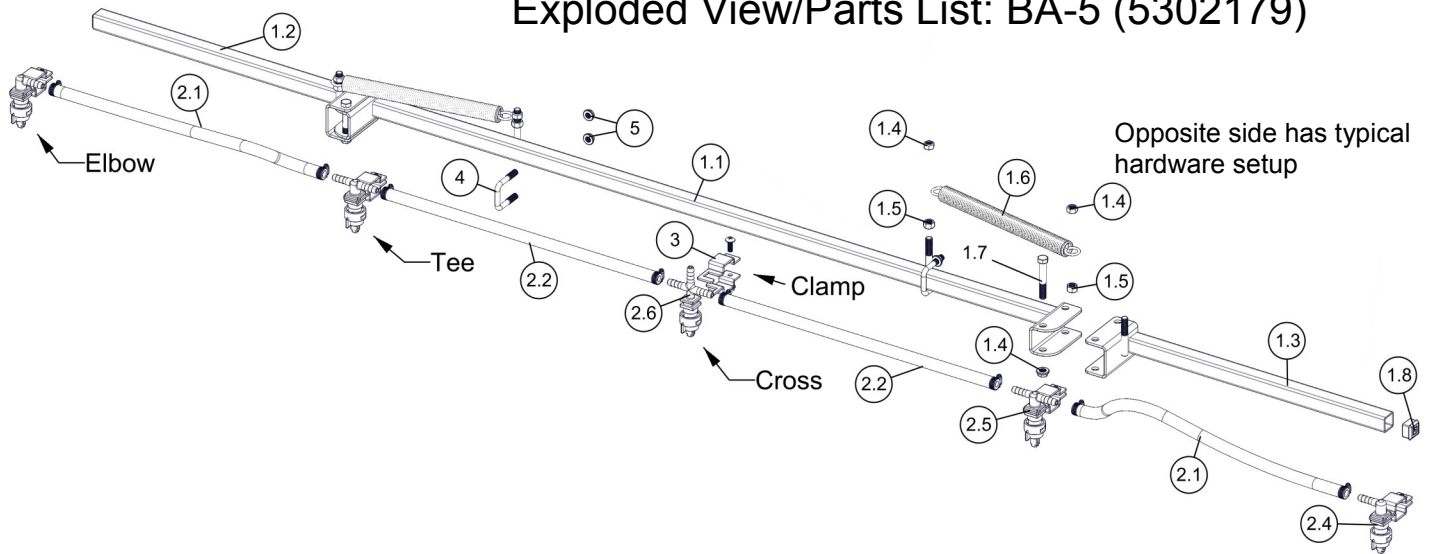
Speed Chart

Speed in M.P.H. (Miles Per Hour)	Time Required in seconds to travel a distance of		
	100 Ft.	200 Ft.	300 Ft.
1.0	68 sec.	136 sec.	205 sec.
2.0	34	68	102
3.0	23	45	68
4.0	17	34	51
5.0	14	27	41
6.0	11	23	34
7.0	9.7	19	29
8.0	8.5	17	26
9.0	7.6	15	23
10.0	6.8	14	20

Typical Spray Pattern (5-Nozzle Boom)

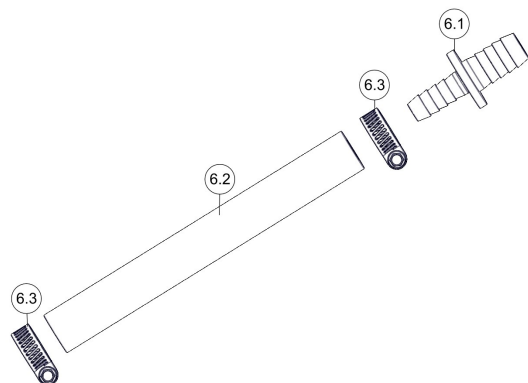
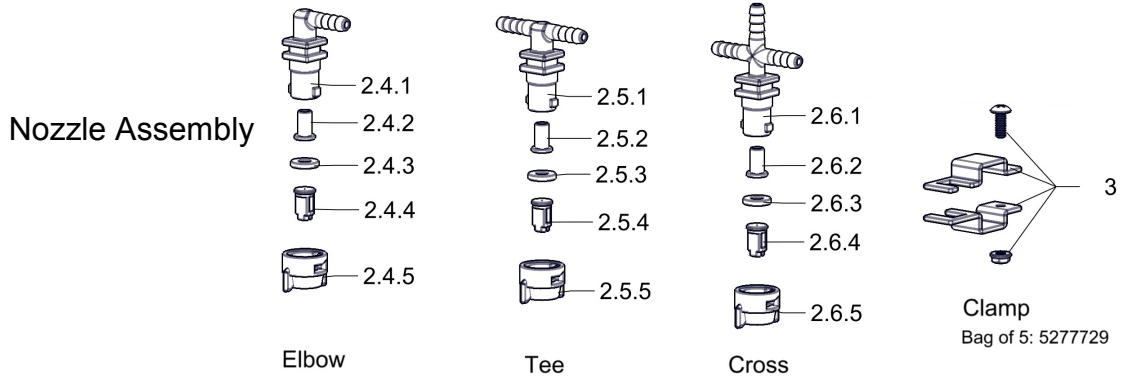


Exploded View/Parts List: BA-5 (5302179)



Ref. #	Part #	Description	Qty
1	5277779	Boom Sub-Assembly (1" Sq. Tube)	1
1.1	5277838	Center Boom Tube 1" Sq.	1
1.2	5277834	LH Outer Boom Tube 1" Sq.	1
1.3	5277835	RH Outer Boom Tube 1" Sq.	1
1.4	5006345	3/8"-16 Flange Locknut (Grade F)	6
1.5	5006259	3/8"-16 Hex Whiz (Flange) Locknut	4
1.6	5019228	Extension Spring	2
1.7	5034169	H.H.C.S., 3/8"-16 x 2 1/2"	2
1.8	5046106	Square Cap, Black (1" Square Tube)	2
2	5277695	5-Nozzle Harness (3/8" & 1" Sq Tube)	1
2.1	5020534	Hose, 3/8"-1 Brd. x 21"	2
2.2	5020531	Hose, 3/8"-1 Brd. x 19-3/8"	2
2.3	5051144	Hose Clamp, 3/8"	8
2.4	5277689	"ELL" Nozzle Sub-Assembly (3/8")	2
2.4.1	5056113	Single Hose Shank (3/8" Hose)	1
2.4.2	5116019	Nozzle Strainer, Red (50 Mesh)	1
2.4.3	5016157	Seat Washer (QJ Caps)	1
2.4.4	5018371	Air-Induction XR Flat Spray Tip (AIXR11002VP)	1
2.4.5	5046219	Quick TeeJet Cap ONLY (Yellow)	1
2.5	5277690	"TEE" Nozzle Sub-Assembly (3/8")	2

Ref. #	Part #	Description	Qty
2.5.1	5056114	Double Hose Shank (3/8" Hose)	1
2.5.2	5116019	Nozzle Strainer, Red (50 Mesh)	1
2.5.3	5016157	Seat Washer (QJ Caps)	1
2.5.4	5018371	Air-Induction XR Flat Spray Tip (AIXR11002VP)	1
2.5.5	5046219	Quick TeeJet Cap ONLY (Yellow)	2
2.6	5277691	"Cross" Nozzle Sub-Assembly (3/8")	1
2.6.1	5056115	Triple Hose Shank (3/8" Hose)	1
2.6.2	5116019	Nozzle Strainer, Red (50 Mesh)	1
2.6.3	5016157	Seat Washer (QJ Caps)	1
2.6.4	5018371	Air-Induction XR Flat Spray Tip (AIXR11002VP)	1
2.6.5	5046219	Quick TeeJet Cap ONLY (Yellow)	1
3	5277923	Boom Clamp Assembly (1in Sq.)	5
4	5034159	Square U-Bolt, 5/16" x 1 5/16" x 1 7/8"	2
5	5006307	5/16"-18 Hex Whiz (Flange) Locknut	4
6	5277926	1/2" Hose to 3/8" Hose Conversion Kit	1
6.1	5067228	1/2" x 3/8" Poly Hose Mender	1
6.2	5020417	Hose, 3/8"-1 Brd. x 5-1/2"	1
6.3	5051144	Hose Clamp, 3/8"	2



#5277926 1/2" to 3/8" Conversion Kit

If your existing sprayer has a 1/2" I.D. hose supplying your original boom and you now have a boom with 3/8" I.D. hose, this conversion kit allows you to easily convert your supply line to fit onto the 3/8" I.D. hose of your new boom.

Slip the hose mender's 1/2" barb (larger side) into your existing 1/2" feeder hose and clamp in place with (existing) original hose clamp. Slip the (included) 3/8" hose (5-1/2" long) onto the 3/8" barb of the hose mender and clamp in place with one of the supplied hose clamps.

Now attach the open end of the hose onto the fitting on your boom which accepts the feeder line hose. Make sure you place the hose clamp onto that hose prior to attaching it to your boom.